



TOKYO  
METROPOLITAN  
UNIVERSITY

This edition features interviews with international students and international exchange activities with our partner universities.

# TMUtimes News Letter

2020 Vol.4



## ▶ Contents

## Welcome to Tokyo Metropolitan University!

- Voices of International Students
- News & Topics 2019
- TMU Facts

The Japanese name of Tokyo Metropolitan University will be changed from “首都大学東京 (Shuto-Daigaku-Tokyo)” to “東京都立大学 (Tokyo-Toritsu-Daigaku)” effective April 1, 2020. The English name “Tokyo Metropolitan University” will remain unchanged.

Our university's new Japanese name “東京都立大学 (Tokyo-Toritsu-Daigaku)” clearly indicates that the university was established by the Tokyo Metropolitan Government, and this renaming will serve as an opportunity for us to achieve further development.

As the only public prefectural university in Tokyo, one of the leading metropolitan cities of the world, Tokyo Metropolitan University is committed to increasing its presence not only by honing its educational and research capabilities as the university's core function, but also by passing on their outcomes more than ever to the city of Tokyo as a think tank of the metropolis.

# Welcome to Tokyo Metropolitan University!

Tokyo Metropolitan University is the only public university in Tokyo and among the leading Japanese comprehensive universities, which aims to maintain high standards in both research and education.

## A Message from the Vice-President for International Affairs

TMU, the only public university in the Tokyo Metropolis, welcomes students from all over the world who seek quality education based on outstanding research prowess. We were ranked 7th among all the universities in Japan (THE World University Rankings 2019) and have been providing students with unique education, activities, and a favorable environment for advanced research. Besides the usual courses conducted in Japanese, some are conducted in English to suit the diverse needs of students with different backgrounds and expertise. A noteworthy feature is that almost all international students are granted tuition waiver and scholarship as we do not want economic conditions to pose any hurdles for those who seek better educational opportunities. Please join us in witnessing how we achieve our long-term vision toward 2030. You will complete us.



Vice-President Masao Ayabe

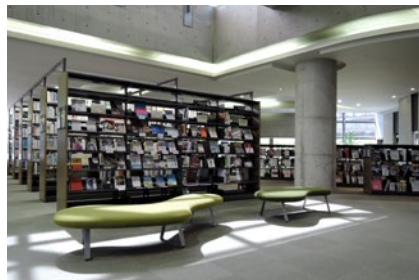
## About TMU Libraries

### Central Library



It is located in the center of Minami-osawa Campus, so it is easy to access from anywhere else on the premises. It holds more than 700,000 materials to help your studies. You can also use electronic journals/books. A noteworthy feature of our materials is that they include precious collections—the library houses 13,000 old documents from the Edo and Meiji eras, and the most famous collection is “Mizuno-ke monjo,” which are the documents of the Mizuno family who served the Shogun of the Edo era. In recent years, we have held exhibitions of these precious collections to allow more people to see them. The library has tailored seating for individuals as well as groups, so you can choose the one that fits your learning style. If you have questions about the library or face trouble finding the materials you need, you can approach the librarian at the reference counter. If your question is study-related, you can ask the graduate students at the learning consultation desk. Please feel free to contact us when you are unsure of anything in the library.

### Hino Library



Located in Bldg. No. 2 on Hino Campus, this is the library of the Faculty/Graduate School of Systems Design. In the spacious and stylish basement, about 170,000 materials on systems design are stored. These mainly cover information science, electrical engineering & computer science, mechanical systems engineering, aeronautics & astronautics, and industrial art. Giving much thought to active learning, the library offers communication space by designating 2 rooms for group study. It also organizes many instructional events, including a series of “Writing English Theses Seminars” and movie shows on systems design, that are popular among library users. Its official website contains a catalogue of e-journals, available for browsing only on Hino Campus, and “A Book Your Systems Design Professor Recommends” with a comment by the professor.

### Arakawa Campus Library



This one is for the Faculty of Health Sciences and Graduate School of Human Health Sciences. It houses an exceptional collection of patients’ and doctors’ diaries as well as more than 140,000 volumes of medical care-related materials, providing a large compendium of medical database and e-journals. The library has a spacious reading room and media space equipped with 16 PCs; it also offers notebook computers on loan. What is remarkable about this library is its learning environment—it has simulation devices for acquiring physical assessment skills, in addition to the group work rooms, multi-purpose communication squire, and self-study rooms. It hosts literature retrieval seminars and various types of guidance sessions, and shows medical-themed movies from time to time throughout a year.

## About TMU

Access to TMU



Campus Map



Faculty/Graduate



Researcher



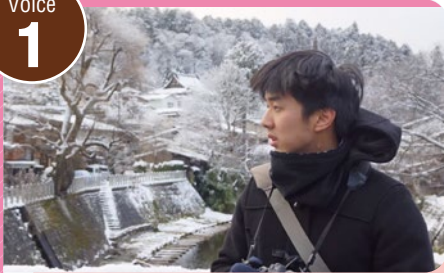
OpenCourseWare



# Voices of International Students

We have many international students enrolled in the undergraduate and graduate schools, and the number continues to rise every year.

Voice  
**1**



**Name** Chaijaroen Permpoon

**Program** Tokyo Human Resources Fund for City Diplomacy Scholarship Program

**Q1. What would you want to achieve through your research studies at TMU?**

Studying abroad is a good opportunity to learn about different people and cultures—I

have picked up many soft and hard skills from all kinds of people. Research studies at TMU give me a chance to develop and improve myself. Ultimately, I wish to channel all my knowledge from my research studies into my career path. I'm aware of how valuable and useful this would be in the future.

**Q2. Please describe your research theme in simple terms.**

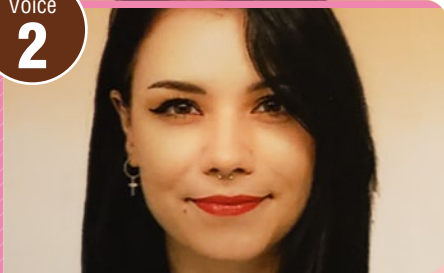
My research theme is Green and Sustainable Chemistry, which is the process of designing and synthesizing chemicals by minimizing and avoiding the use of dangerous synthetic substances that are toxic to the environment. As you may know, nowadays, people use chemicals in numerous ways, and there are many misunderstandings about waste

from chemical reactions. So, my research focuses on developing new biodegradable and recyclable functional polymers from plant oils by metathesis polymerization, which would help reduce environment contamination.

**Q3. Have you witnessed any cultural differences in Tokyo that have surprised you?**

People here work really hard and with dedication; for example, a colleague of mine works 7 days a week, often till late in the night. This was a shock for me at first, but now, having studied here for a year, I see that it is quite normal for the Japanese, and it has motivated even me to work as hard as them.

Voice  
**2**



**Name** Blaise Fanny

**Program** Tokyo Human Resources Fund for City Diplomacy Scholarship Program

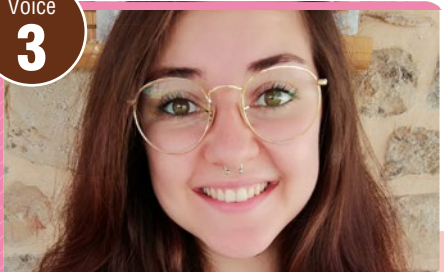
**Q1. What is your main reason for choosing TMU as a place to do research studies?**

Before TMU, I studied Japanese culture and language in Paris for 5 years, and my biggest dream was to come to Japan to finish my research studies. I was able to achieve that thanks to TMU and particularly my research director, Yuji Nishiyama. The main reason I decided to come here is because it gave me the freedom to choose my research theme, as long as my professor agreed with it, while making me a grantee of Tokyo Human Resources Fund for City Diplomacy. Also, I wanted to work with TMU's excellent professors.

**Q2. Please describe your research theme in simple terms.**

My research is on Kabukicho, known as one of the most dangerous places in Japan; ironically, when this district was built, after World War II, it was meant to be a cultural and "ethnic" place. I want to understand how Kabukicho went from being a calm place to a violent one, and then explain the measures taken to improve its image, especially recently for the 2020 Olympics, and their impact on its underground culture.

Voice  
**3**



**Name** Clémentine COMBE

**Program** Semester Abroad at Tokyo Metropolitan University (SATOMU)

**Q1. Why did you choose TMU to study abroad in Japan?**

My thesis advisor back in France suggested I go to TMU this year as I am in Japan to conduct some field research for my master's thesis. As it is close to Tokyo and

considering its stellar reputation, my advisor recommended TMU to me. I, too, am located close to Tokyo but away from the center; hence, TMU provides the ideal environment to work in—accessible but not chaotic.

**Q2. Have you experienced any culture shock while in Japan?**

Seeing that I have been studying the Japanese culture for 7 years now at university (in France), I think I was prepared for all the things that could "shock" me in Japan. Nonetheless, there are still some things that surprise/confuse me—for instance, when I hear people sniffing in the train instead of blowing their nose.

**Q3. What are your impressions of TMU?**

So far, I am very satisfied with the many experiences I have had at TMU. I think this university emphasizes on academic research and is particularly active in its academic development. The Five-Continent Student Symposium, held on November 9, is an example of the many activities TMU organizes in support of its research program and international relationships. Though I feel a little lost at TMU sometimes, as it is a huge university, I enjoy its dynamism and the welcoming attitude of the International Center as well as professors.

## 1st Global Discussion Camp held on TMU Minami-osawa Campus!

The 1st Global Discussion Camp (the Camp) was held from August 17 to 24, 2019 on TMU's Minami-osawa Campus. Five undergraduate students and 2 faculty members from the University of Leicester (UoL) were invited to participate in it with more than 20 TMU students and faculty members.

The Camp is an initiative under TMU Strategic Partnerships Program launched in January 2018. It provides a unique opportunity to both TMU and its strategic partners' undergraduate students to come together, discuss, and present their research, and develop presentation and professional skills over 7 days.

The 1st Camp covered a range of academic disciplines, encompassing astrophysics, molecular and structural biology, neuroscience, and biomedical engineering under the title: Life to Cosmos—From Biochemical, Biomedical and Environmental Studies to Space Research.

Students from both universities were divided into 4 groups based on the research topics they had selected in advance. From Day 1, they undertook group assignments and projects, did lab activities and excursions together, and discussed their research results under the supervision of TMU and UoL faculty

members. To wrap up the Camp, each student group presented its learnings to the larger TMU community.



## Report on GPAC (Global Partnership of Asian Colleges) 2019 Participation

GPAC is an international student forum, whose members are higher education institutions from 6 countries and regions across Asia. The members take turns to host the forum. Every year, more than 100 students, faculty, and staff participate in it. TMU became an official member of it in 2019, when 20 TMU students stayed at Vietnam National University, the host, from August 26 to 31 and took part in presentations and discussions on research outcomes, and other exchange events at the forum.



Presentation competition finally reaches the final round



Participating students at a welcome party



Multinational groups compete each other at presentation session

Summary of the GPAC 2019 is as follows:

- (1) Host Country/University: Vietnam, Vietnam National University
- (2) Schedule & Content: 8/26 (MON) - 8/31 (SAT) Presentations, City Tour, Farewell Party, Friendship Exchange Events
- (3) Presentations

Presentation by each university:

This year's overall theme was "Digital Economies in Asia."

Presentation by multinational groups:

Participating students formed mixed groups comprising different nationals, and each group worked out solutions for the given issue and gave a presentation.

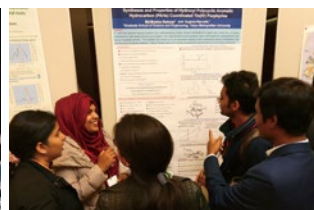
You can find more information on

<https://www.linkedin.com/school/corp-tmu/>

## Annual Meeting of Tokyo Human Resources Fund for City Diplomacy

The 2019 Annual Meeting of Tokyo Human Resources Fund for City Diplomacy Scholarship Program was held with 118 attendees studying under the program and faculty/staff.

This year marked the 4th annual meeting, which served as an occasion for international scholarship students (current/alumni) under the Asian Human Resources Fund and Tokyo Human Resources Fund for City Diplomacy, their academic supervisors, TMU faculty/staff, and Tokyo Metropolitan Government officials to get together to promote exchanges among them.



## A Look at Numerical Facts (Data)

- Ranked 7th among Japanese universities (Times Higher Education World University Rankings 2019)
- Over 9,000 students (about 7,000 undergraduate and about 2,300 graduate)
- About 700 faculty staff and 500 administrative staff
- Over 600 international students from about 40 countries
- Over 200 Student Associations

## Academic Composition (7 faculties and 7 graduate schools)

### Faculty

- Faculty of Humanities and Social Sciences
- Faculty of Law
- Faculty of Economics and Business Administration
- Faculty of Science
- Faculty of Urban Environmental Sciences
- Faculty of Systems Design
- Faculty of Health Sciences

### Graduate School

- Graduate School of Humanities
- Graduate School of Law and Politics
- Graduate School of Management
- Graduate School of Science
- Graduate School of Urban Environmental Sciences
- Graduate School of Systems Design
- Graduate School of Human Health sciences

